



City of Manchester
Energy Performance Report
For the Period January 2012 thru March 2012

School Buildings

Prepared By:

Jeffrey Myrdek

ARAMARK Engineering Solutions

May 17, 2012

City of Manchester

Energy Program Performance Summary

School Buildings

May 18, 2012

First Quarter Performance (2012)

- ❖ Consumption reduction¹ :
 - Energy reduction: **14.8%**
- ❖ Financial savings : **\$161,376**
 - Electricity : \$70,230
 - Natural Gas : \$91,146
- ❖ GHG avoided emissions:
 - 1,349,087 lbs of CO2

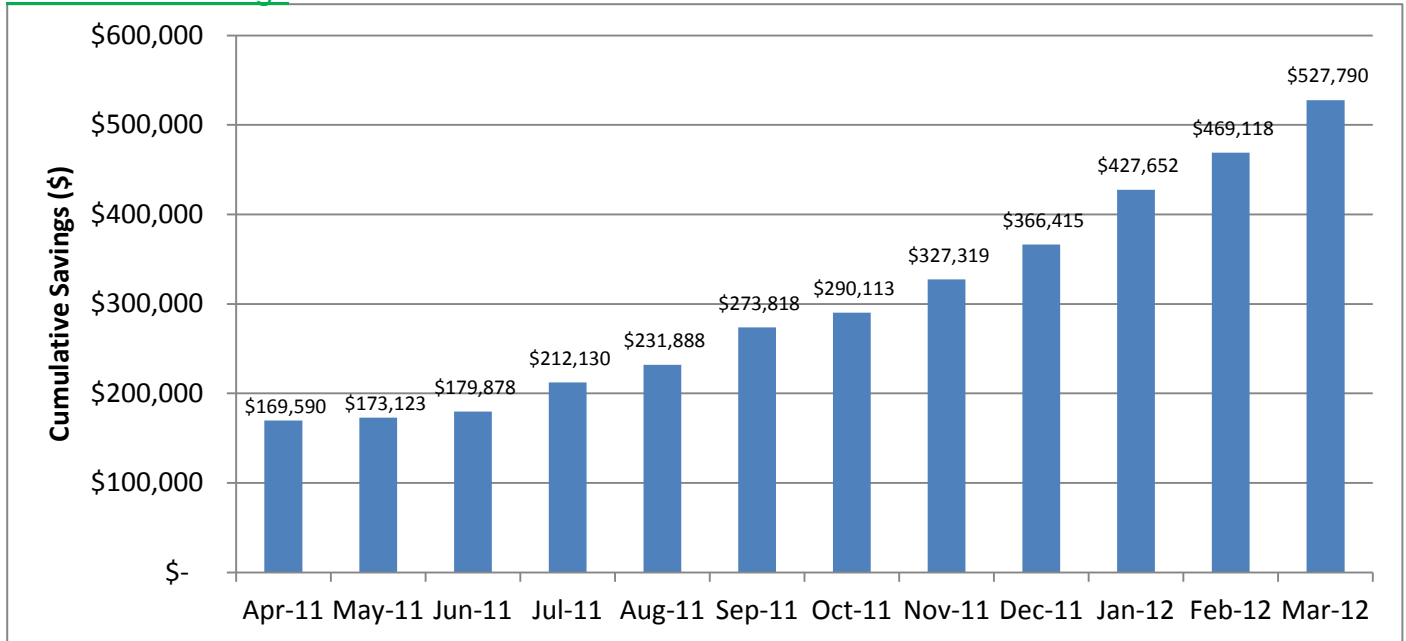
Contract Year to Date (since 01/2012)

- ❖ Consumption reduction¹ :
 - Energy reduction: **14.8%**
- ❖ Financial savings : **\$161,376**
 - Electricity : \$70,230
 - Natural Gas : \$91,146
- ❖ GHG avoided emissions:
 - 1,349,087 lbs of CO2

Total Performance to Date (since 01/2011)

- ❖ Consumption reduction¹ :
 - Energy reduction: **11.9%**
- ❖ Financial savings : **\$527,790**
 - Electricity : \$327,172
 - Natural Gas : \$200,618
- ❖ GHG avoided emissions:
 - 3,851,679 lbs of CO2

Cumulative Savings



Current Profile (Past 12 months)

- ❖ Energy Intensity : 52 kBtu/SqFt

Baseline Profile (July 2009 – June 2010)

- ❖ Energy Intensity: 60 kBtu/SqFt

¹ Comparisons are made to the base year. Base year periods vary slightly for some meters but all fall between July 2009 and June 2010.

City of Manchester

Energy Program Performance Summary

School Buildings

May 18, 2012

First Quarter Performance (2012)

- ❖ Consumption reduction¹ :
 - Energy reduction: **14.8%**
- ❖ Financial savings : **\$161,376**
 - Electricity : \$70,230
 - Natural Gas : \$91,146
- ❖ GHG avoided emissions:
 - 1,349,087 lbs of CO2

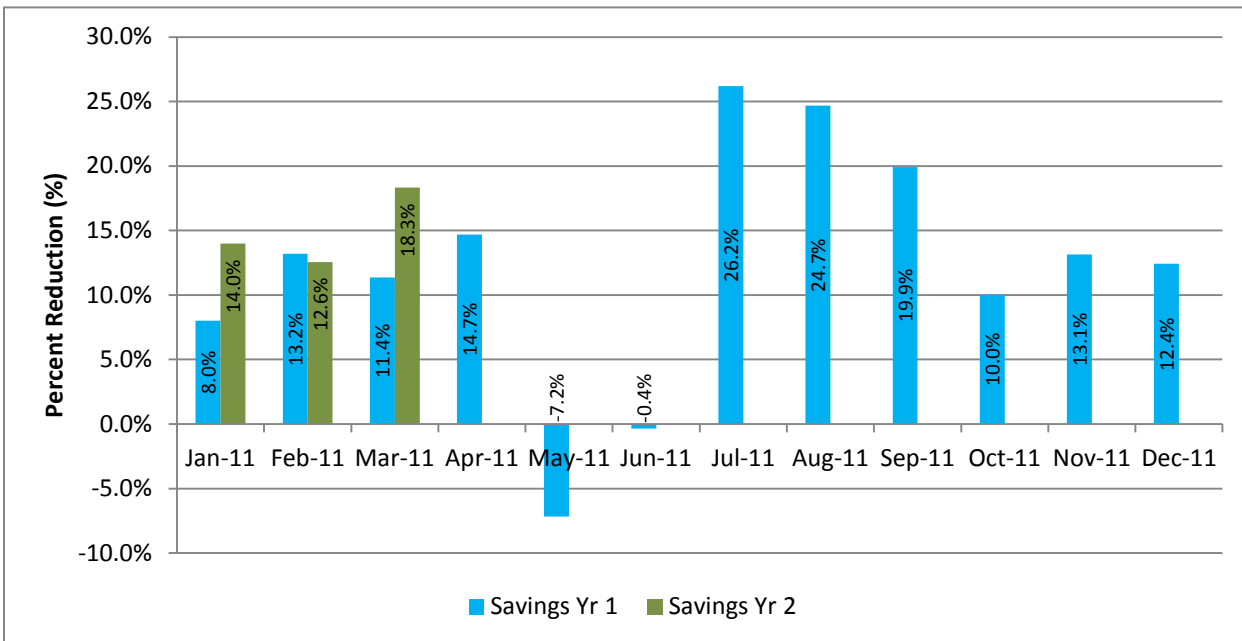
Contract Year to Date (since 01/2012)

- ❖ Consumption reduction¹ :
 - Energy reduction: **14.8%**
- ❖ Financial savings : **\$161,376**
 - Electricity : \$70,230
 - Natural Gas : \$91,146
- ❖ GHG avoided emissions:
 - 1,349,087 lbs of CO2

Total Performance to Date (since 01/2011)

- ❖ Consumption reduction¹ :
 - Energy reduction: **11.9%**
- ❖ Financial savings : **\$527,790**
 - Electricity : \$327,172
 - Natural Gas : \$200,618
- ❖ GHG avoided emissions:
 - 3,851,679 lbs of CO2

Monthly Energy Consumption Reduction Comparison



Current Profile (Past 12 months)

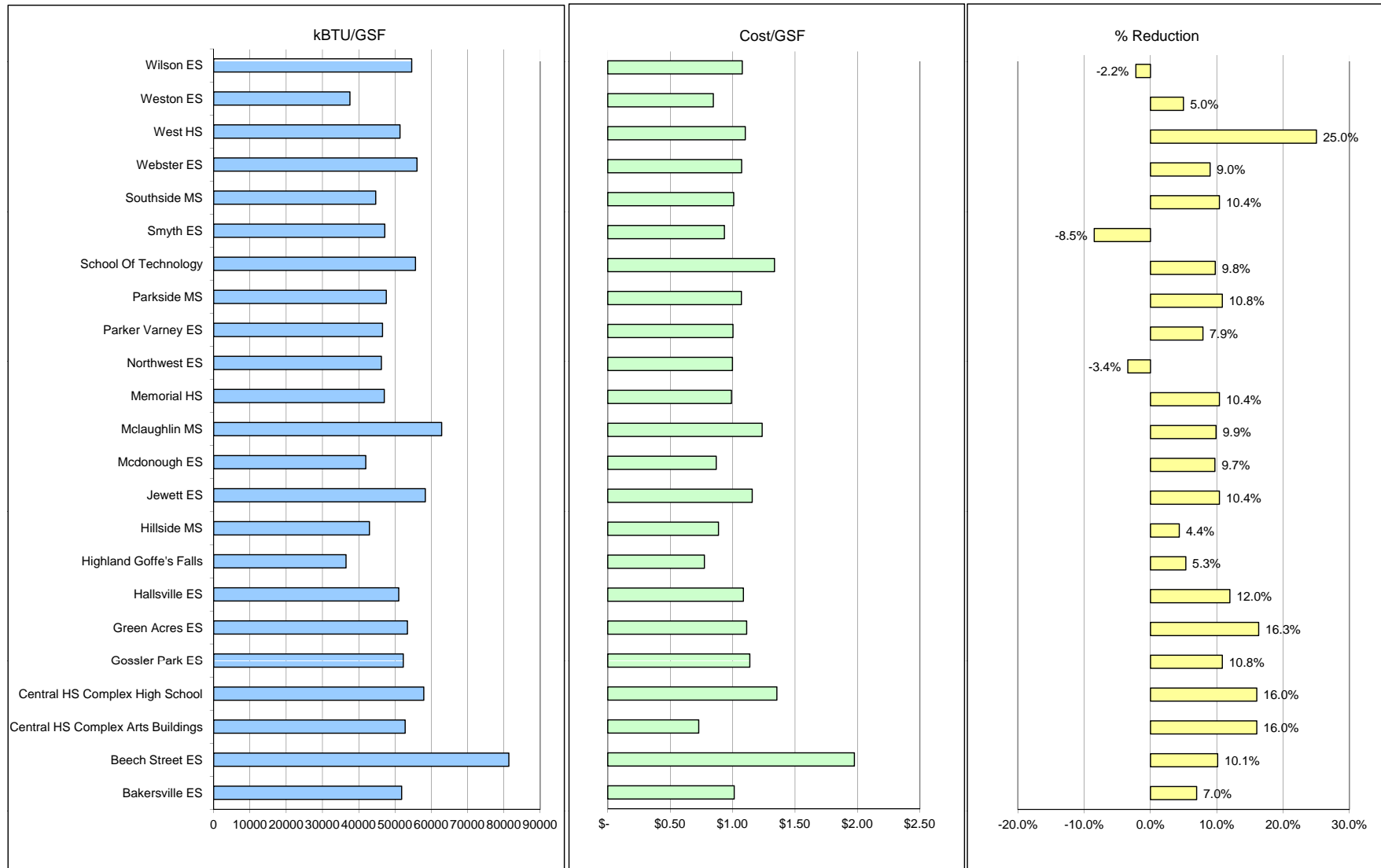
- ❖ Energy Intensity : 52 kBtu/SqFt

Baseline Profile (July 2009 – June 2010)

- ❖ Energy Intensity: 60 kBtu/SqFt

¹ Comparisons are made to the base year. Base year periods vary slightly for some meters but all fall between July 2009 and June 2010.

City of Manchester - Building Energy Performance Comparison (School) Annualized Through March 31, 2012



City of Manchester Building Benchmark - Schools (Annualized through March 2012)

